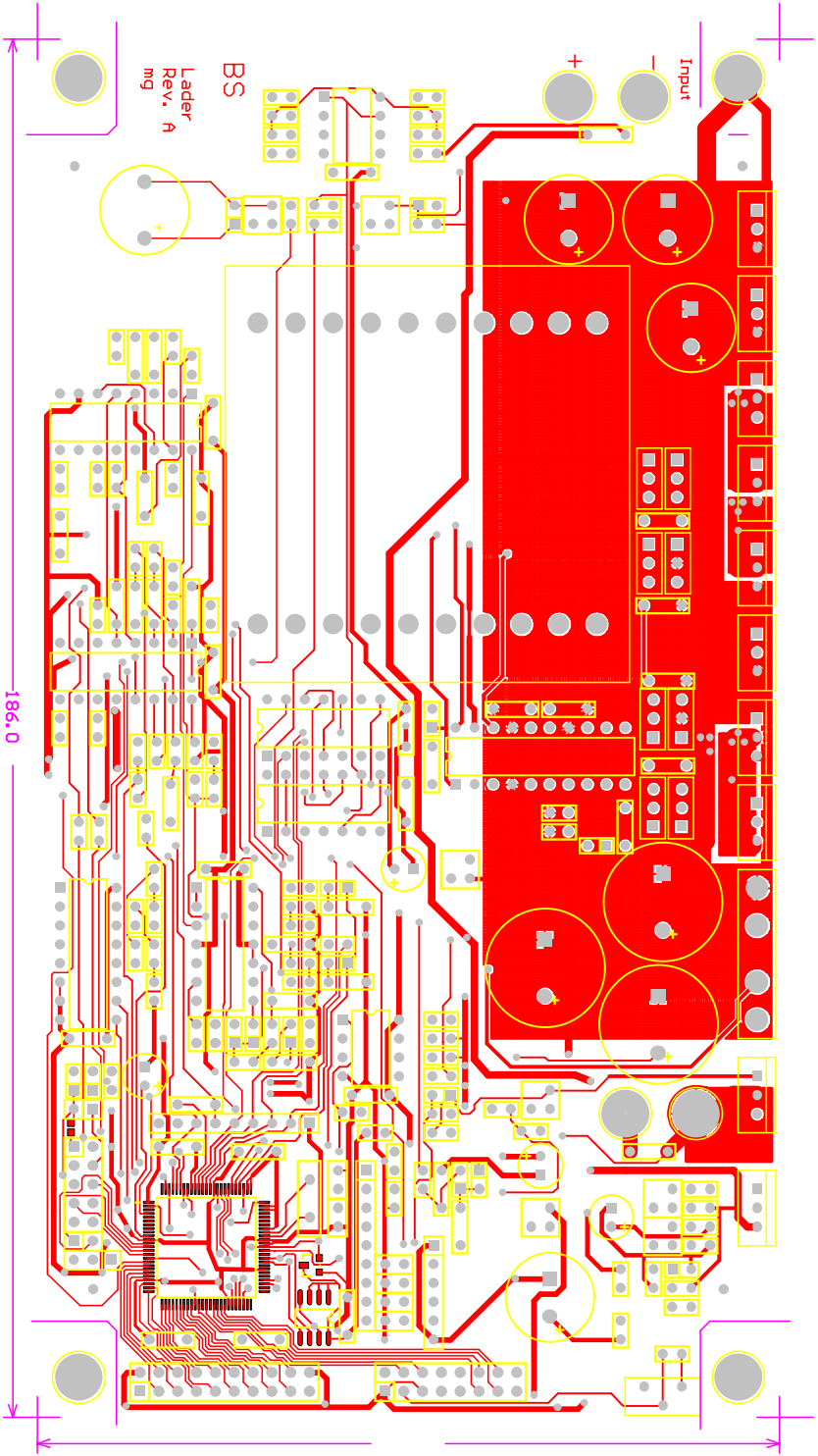
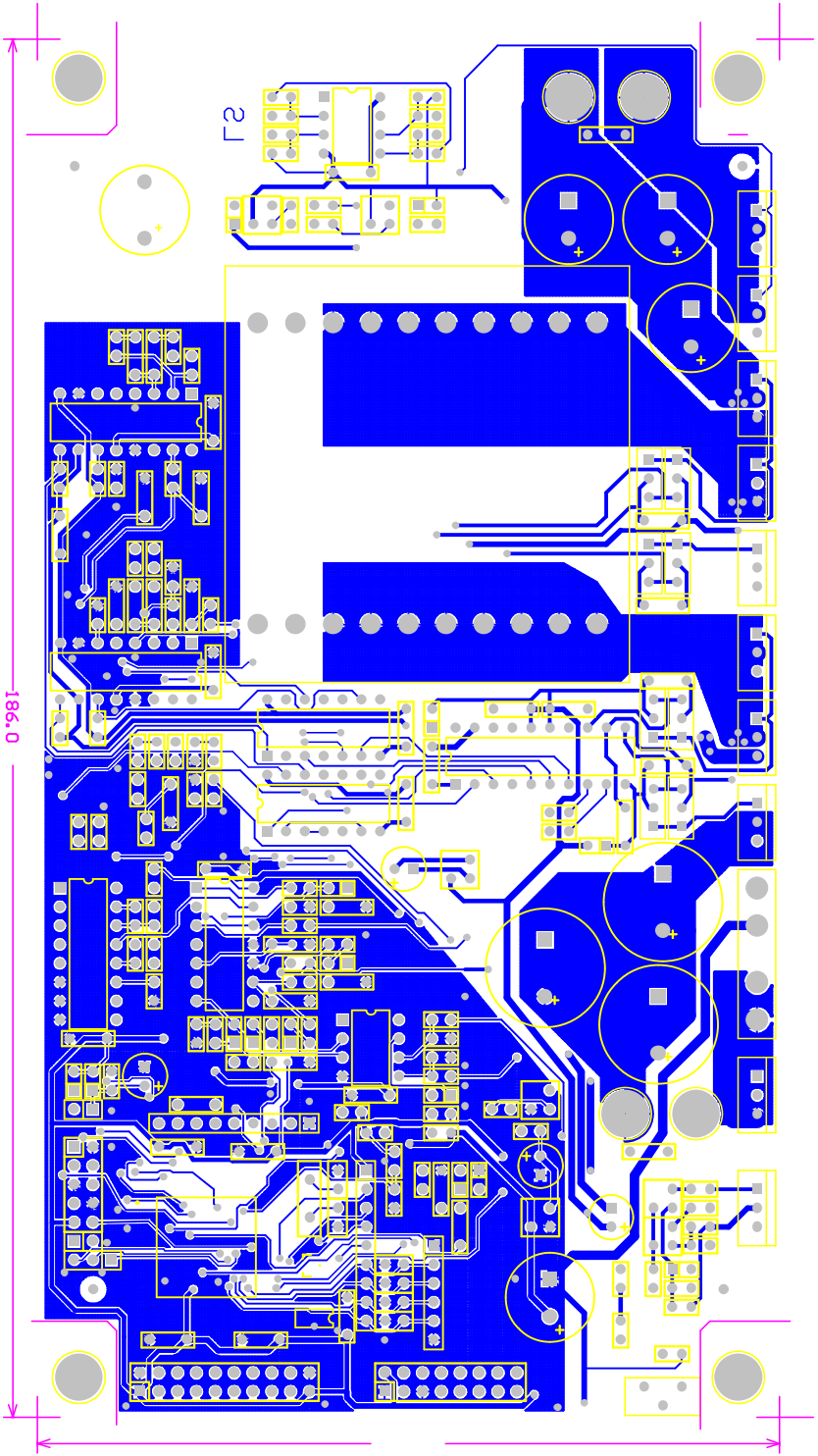


LADER Best. Seite

Bauteile





LADER

Loetseite

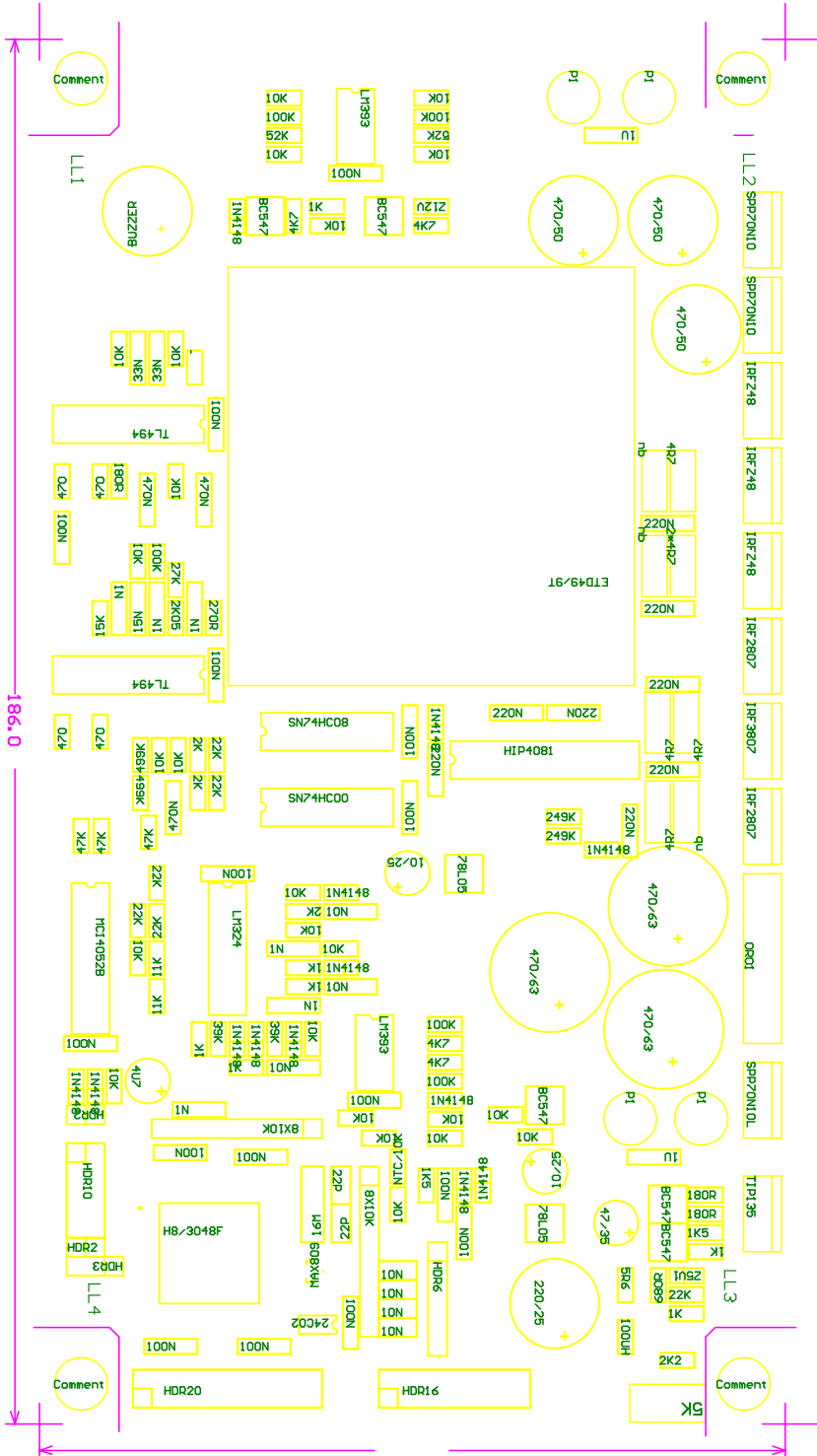
Bauteile

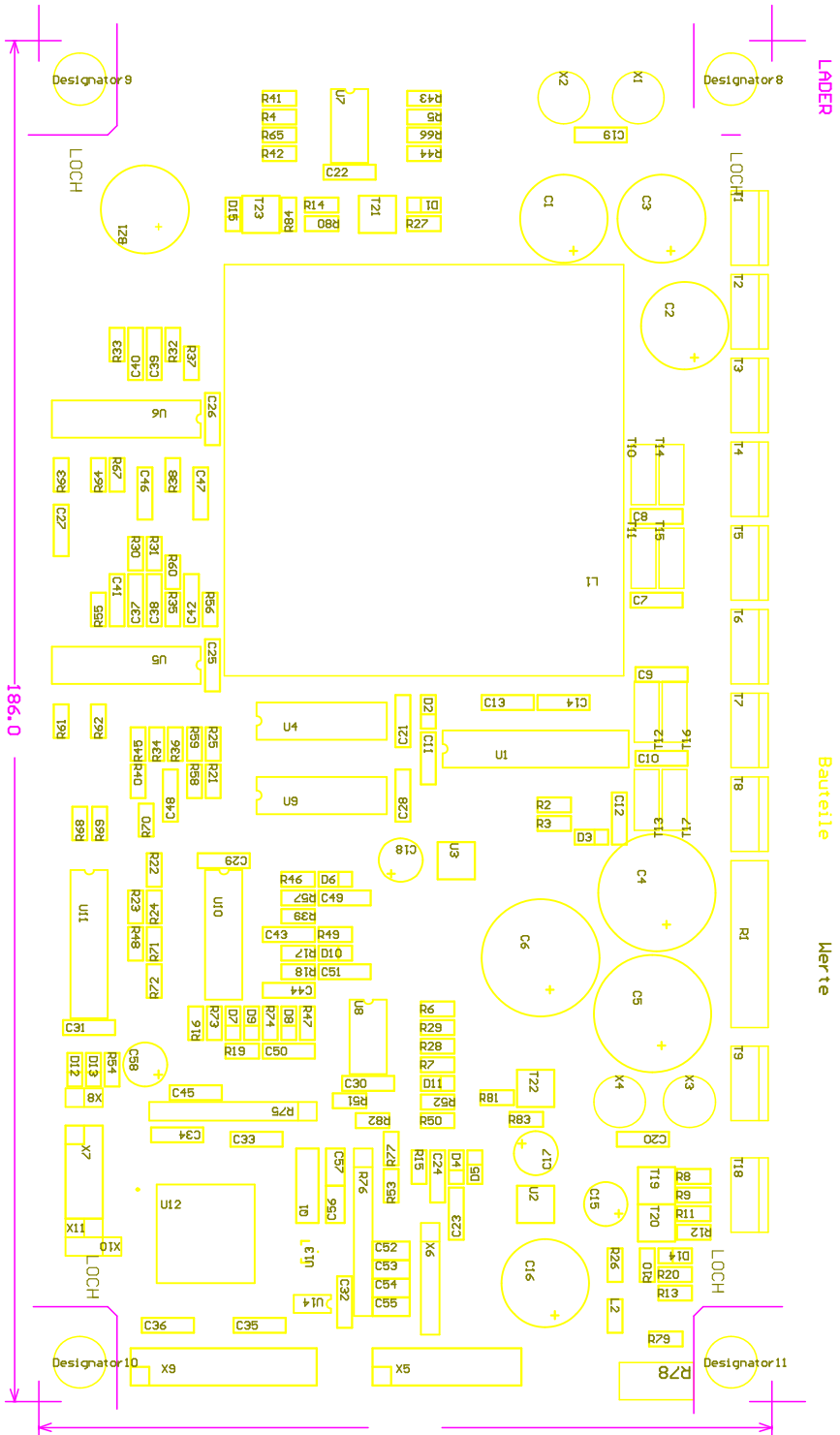
186.0

21

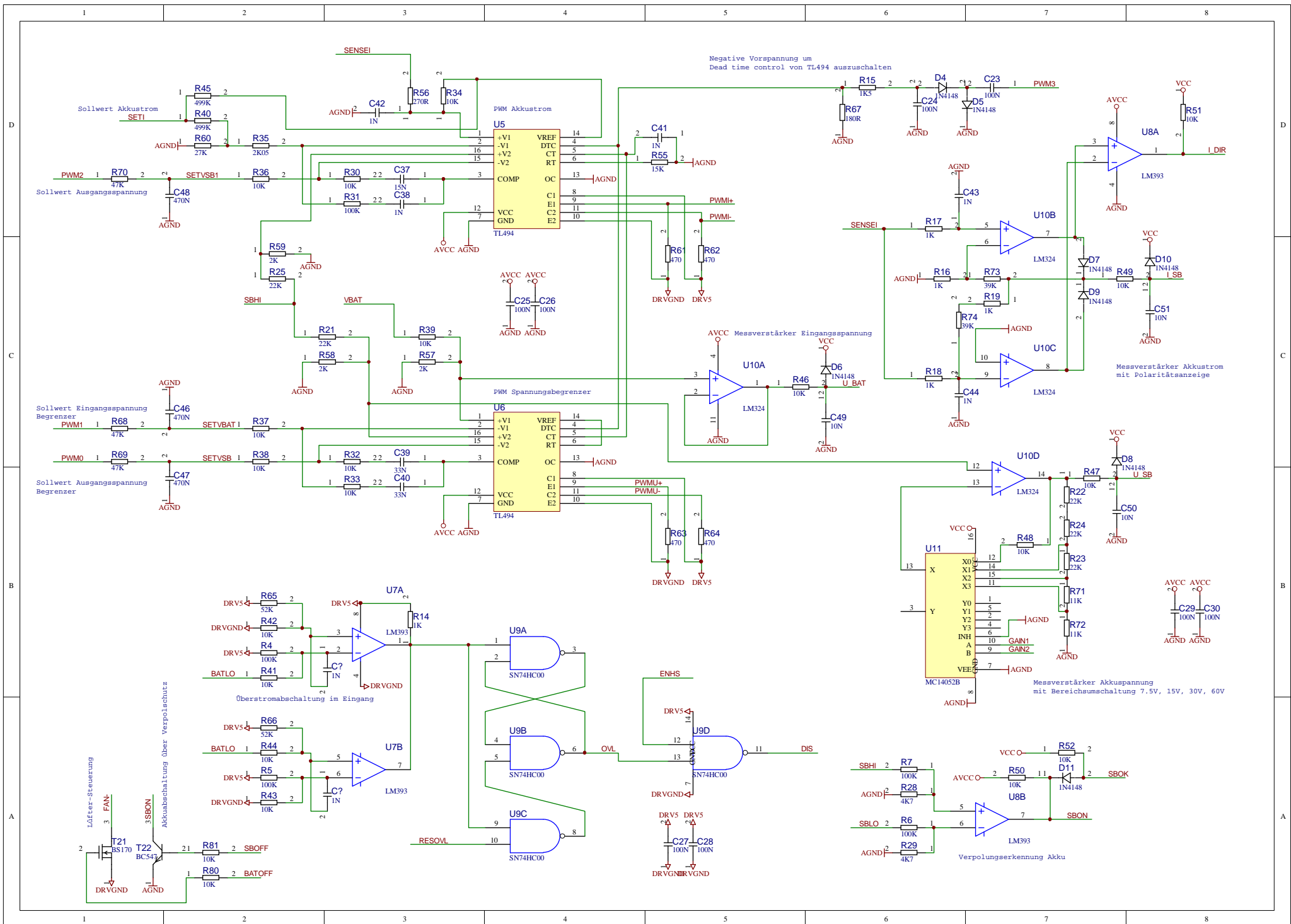
LODER

Bauteile Nummer n









Negative Vorspannung um Dead time control von TL494 auszuschalten

Messverstärker Akkustrom mit Polaritätsanzeige

Messverstärker Akkuspannung mit Bereichumschaltung 7.5V, 15V, 30V, 60V

Verpolungserkennung Akku

Überstromabschaltung im Eingang

Akkubehaltung über Verpolungsschutz

Idfter-Steuerung

3SBON

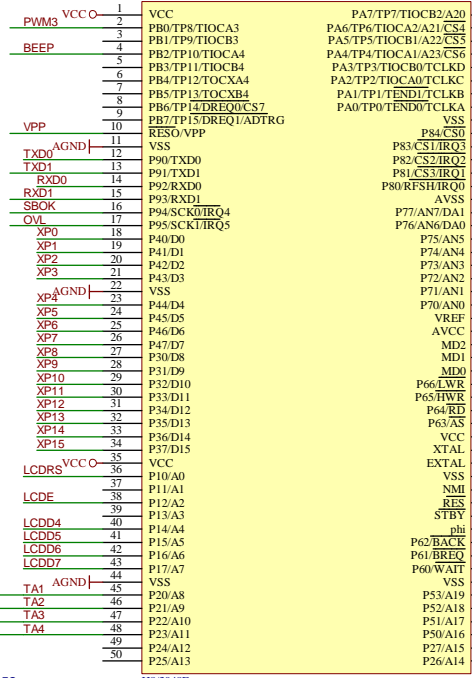
3SBOFF

3SBON

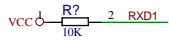
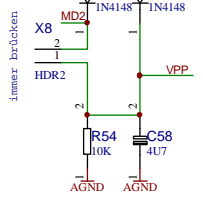
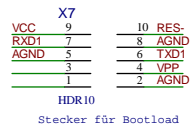
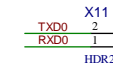
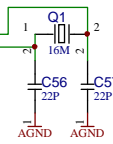
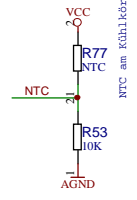
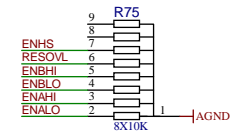
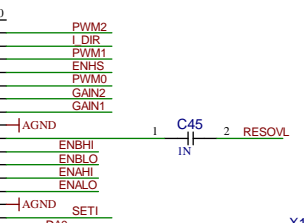
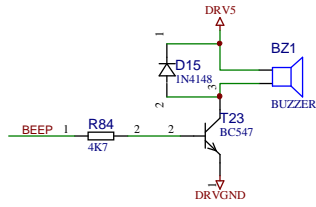
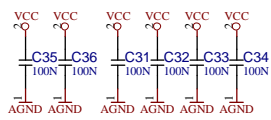
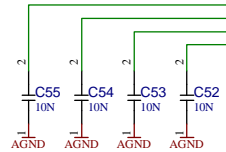
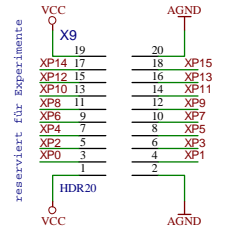
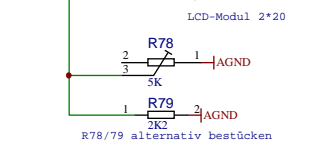
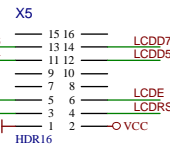
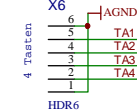
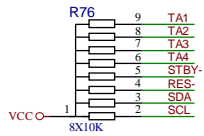
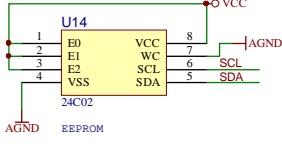
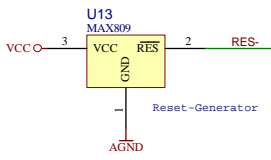
3SBOFF

CPU Hitachi H8/3048

U12



H8/3048F



Immer bruecken

Stecker für Bootload

NTC am Kuehlerkoerper

Strombegrenzung im Spulenstromkreis

